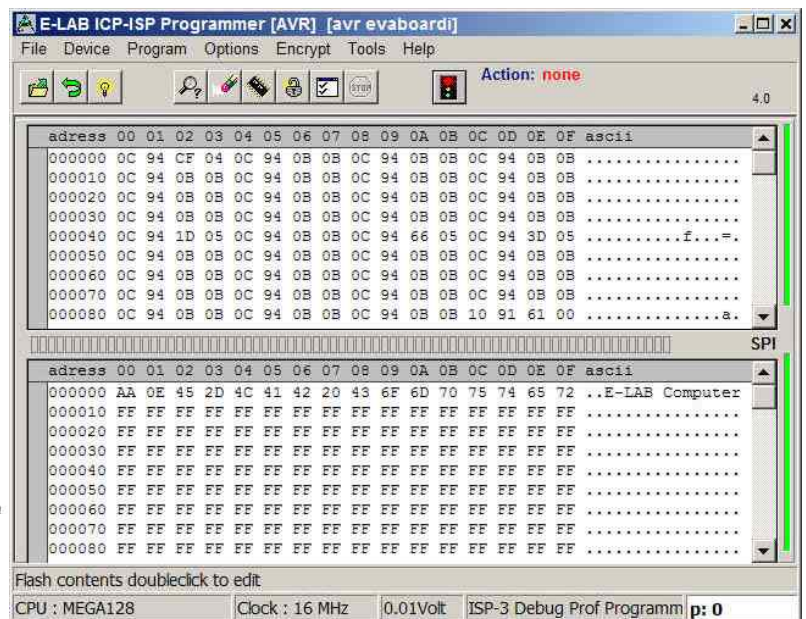


# ISP3-X with AES encryption



## Incircuit Programmer for AVR, AT89Sxx, AT89LSxx, AT89LPxx, TICC1110, CC2510 and CC2430, SPI-Flash, AVR S1200...Mega2560 in SPI + JTAG mode, XMega/PDI, Tiny/TPI

- ISP3-X works in the Full-Speed USB-2 mode. Can also be connected to USB-1 ports and HUBs
- No power supply necessary. The ISP3 can be supplied from the PC interface (USB) or from target.
- Automatic adaption to the target voltage (2.7-6Volt, ca. 17mA)
- Powerful and extensive software
- Software runs on XP/Vista/Windows7, 32 and 64bit. Win98 with some exceptions.
- Small, leightweight and handy device ca. 100x55x20mm
- Supports all SPI, JTAG, PDI and TPI programmable **AVRs**
- Supports all **XMegas** in PDI mode
- Supports all **Tinys** in TPI mode
- Supports all SPI programmable **AT89Sxx**, **AT89LSxx** and **AT89LPxx** types
- Supports the TI/ChipCon **CC1110**, **CC2510** and **CC2430** family
- Supports the SPI-Flash **AT25DFxxx**, **S25FLxxx**, **SST25VFxxx** families
- Programmable output voltage (supply) for the target system. 3.3..5.2Volt 30mA..300mA
- Programs **128kB** Flash in ca. **3sec** (Mega128 JTAG Mode)
- Self update with new firmware through the Internet.
- Option adaptor from Atmel 6pol SPI to Atmel 10pol program connection (not included)
- Option adaptor from E-LAB JTAG to Atmel JTAG program connection (not included)
- Option adaptor from ISP3 6pin to TI/ChipCon CC2430 evaluation board (not included)
- With **AES encryption** of the project and decryption in the UPP re-engineering is absolute impossible.
- **ISP3-X** with USB connection is optimal suitable for development desktop, programming stations and repair stations
- With the included program **PackProg** the ISP3 can be used for small series programming.

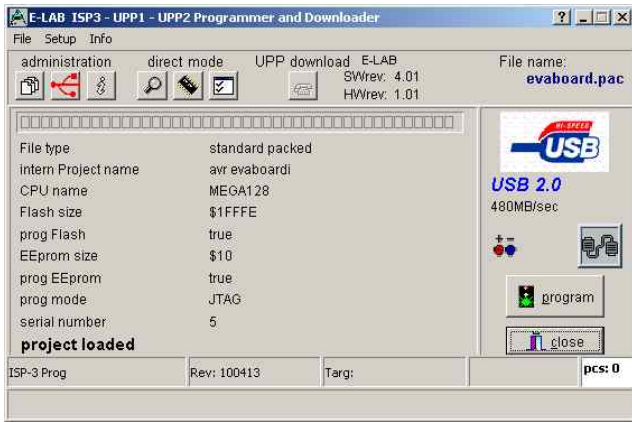
Price ISP3-X €135.00 +ship

**E-LAB Computers**  
Grombacherstr. 27  
D74906 Bad Rappenau

Tel. 07268/9124-0  
Fax. 07268/9124-24  
www.e-lab.de info@e-lab.de

# E-LAB In-Circuit Programmer *ISP3-X*

## PackProg

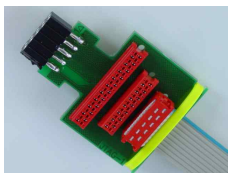


The functions are reduced to:

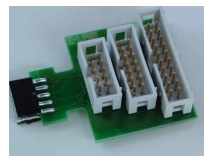
- Project load
- Program Target
- Target test

No manipulations possible (Fuses etc.) by the user.

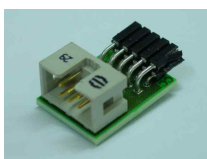
Can be remote controlled via Telnet.



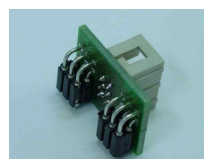
As an option an adaptor is available from E-LAB 6pin SPI to Atmel 10pin SPI



As an option an adaptor is available from E-LAB 10pin JTAG to Atmel 10pin JTAG



As an option an adaptor is available for the Chipcon Evaluation Boards CC1110..CC2511



As an option an adaptor is available for the Chipcon Evaluation Board CC2430DB

**E-LAB Computers**  
Grombacherstr. 27  
D74906 Bad Rappenau

Tel. 07268/9124-0  
Fax. 07268/9124-24  
www.e-lab.de info@e-lab.de